

(II) STANDARD TYPE: 'HP-RG' SERIES

MAX. MACHINE SPEED UP TO 120 METERS / MIN.

MAX. PRINTING SPEED UP TO 80 - 100 METERS / MIN.

THESE 'HP-RG' SERIES MACHINES ARE MORE ECONOMICAL MODELS FOR PRINTING FLEXIBLE PACKAGING MATERIAL (PP, OPP, CPP, PVC,...ETC..).

MAIN FEATURES:

- (1) UNWINDING SECTION:
 - (A) DOUBLE SHAFTS, FIXED TYPE
 - (B) POWDER BRAKE & TENSION SENSOR FOR AUTOMATIC TENSION CONTROLLER.
 - (C) AUTOMATIC EDGE POSITION CONTROLLER (EPC)
- (2) PRINTING SECTION:
 - (A) MAIN FRAME THICKNESS: 50 MM
 - (B) PRE-ALIGNMENT SYSTEM
 - (C) FIXED TYPE PLATE CYLINDERS.
- (3) DOCTOR BLADE DEVICE
 - (A) USING PNEUMATIC SYSTEM FOR DOCTOR BLADE PRESSURE CONTROL
 - (B) DOCTOR OSCILLATION CONTROLLER
- (4) REWINDING SECTION:
 - (A) DOUBLE SHAFTS, FIXED TYPE.
 - (B) TORQUE MOTORS WITH CONTROLLER FOR FILM REWINDING CONTROL.

HP-RG' SERIES: NUMBER OF COLOURS: 1, 2, 3, 4, 5, 6, 7, 8.

PRINTING WIDTH: 600, 800, 1000, 1200, 1400 MM.

MAX PRINTING SPEED	80 - 100 M/ MIN.	
PRINTING LENGTH	300 - 900 MM	
DRYING EQUIPMENT	HEATER TYPE	
PRINTING AREA BLOWER	1/8 HP X 2 SETS (FOR EACH COLOUR)	
MAX. DIA. OF UNWINDING & REWINDING	600 MM	
MAIN MOTOR	1 COLOR	DC 3 HP
	2 COLORS	DC 3 HP
	3 COLORS	DC 3 HP
	4 COLORS	DC 5 HP
	5 COLORS	DC 7.5 HP
	6 COLORS	DC 7.5 HP
	7 COLORS	DC 10 HP
	8 COLORS	DC 10 HP

OPTIONAL ATTACHMENTS:

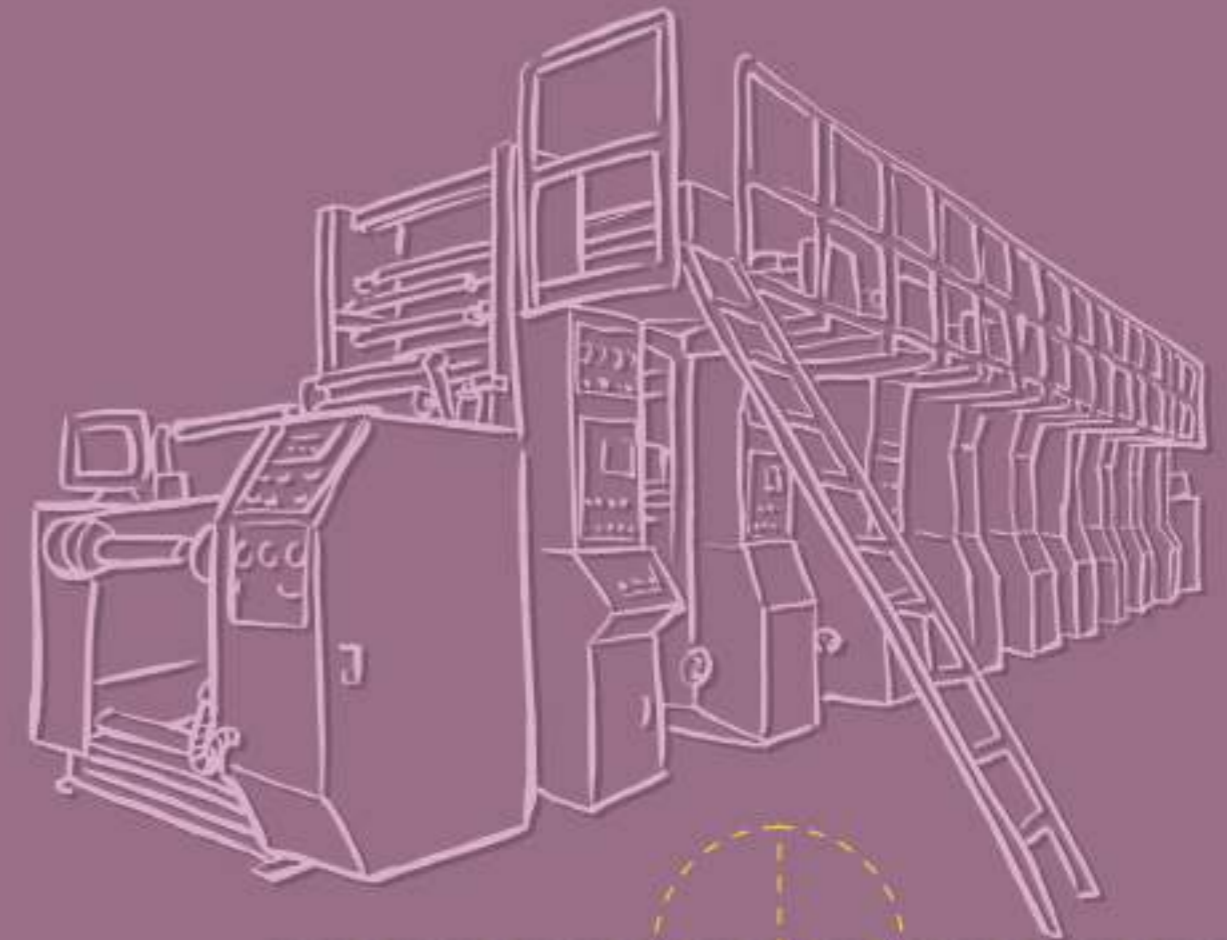
- (1) AUTOMATIC FILM ROLL CHANGING SYSTEM FOR UNWINDING SECTION
- (2) AUTOMATIC FILM ROLL CHANGING SYSTEM FOR REWINDING SECTION.
- (3) AUTOMATIC TENSION CONTROLLER FOR REWINDING SECTION
(MADE IN JAPAN, 'MITSUBISHI' BRAND)
- (4) AUTOMATIC REGISTER CONTROL SYSTEM
- (5) WEB VIEW SYSTEM
- (6) INK VISCOSITY CONTROL & INK CIRCULATION SYSTEM
- (7) TURN BAR SYSTEM FOR REVERSE PRINTING.

HYPLAS[®]

ROTOGRAVURE PRINTING MACHINES
(FOR PRINTING FLEXIBLE PACKAGING MATERIAL)

'HP-RG-SP' SERIES - 'HIGH SPEED' TYPE
(MAX. PRINTING SPEED UP TO 150 - 180 METERS/MIN.)

'HP-RG' SERIES - STANDARD TYPE
(MAX. PRINTING SPEED UP TO 100 METERS/MIN.)



HYPLAS[®]
PLASTIC BAG CONVERTING MACHINERY

CE ISO 9001

HYPLAS MACHINERY CO., LTD.

HEAD OFFICE: 8F-1, NO.376, SEC. 4, REN'AI RD., DA'AN DIST., TAIPEI CITY 106, TAIWAN
TEL:886-2-2755-6885 FAX:886-2-2755-6879 E-mail:hyplasco@ms12.hinet.net <http://www.hyplas.com.tw>

DUBAI OFFICE: SHARJAH, UAE SAIF ZONE:BLOCK NO. Q3-67 TEL:+971-6-5579029 FAX:+971-6-5579029
MR. MAYUR DAMA(+971-501-328-188) E-mail:mayur@hyplas.com.tw
MR. JIGNESH PATEL(+971-508-836-991) E-mail:patel@hyplas.com.tw
MR. DANIEL LIAO(+971-566-492-866) E-mail:daniel@hyplas.com.tw

FACTORY1: DA YUAN INDUSTRIAL PARK, NO.277, CHUNG SHAN NORTH ROAD, DA YUAN DIST., TAOYUAN 337, TAIWAN.
TEL:886-3-386-5778(8 LINES) FAX:886-3-386-5389 E-mail:hyplas.fty@msa.hinet.net

FACTORY2: NO.16, LN. 562, SEC. 3, BINHAI RD., DA YUAN DIST., TAOYUAN CITY 337, TAIWAN.
TEL: 886-3-386-6735 • 886-3-386-1029 FAX:886-3-385-2615 E-mail:hyplas.fty@msa.hinet.net



(I) 'HIGH SPEED' TYPE FULLY AUTOMATIC ROTOGRAVURE PRINTING MACHINES 'HP-RG-SP' SERIES
MAX. MACHINE SPEED UP TO 200 METERS / MIN.
MAX. PRINTING SPEED UP TO 150 - 180 METERS / MIN.

THESE 'HP-RG-SP' SERIES MACHINES ARE SPECIALLY DESIGNED FOR THE PRINTING OF CELLOPHANE, PET, OPP, PAPER, ALUMINUM FOIL, PP, PE, PVC FILM AND OTHER SIMILAR FLEXIBLE PACKAGING MATERIAL.

MAIN FEATURES:

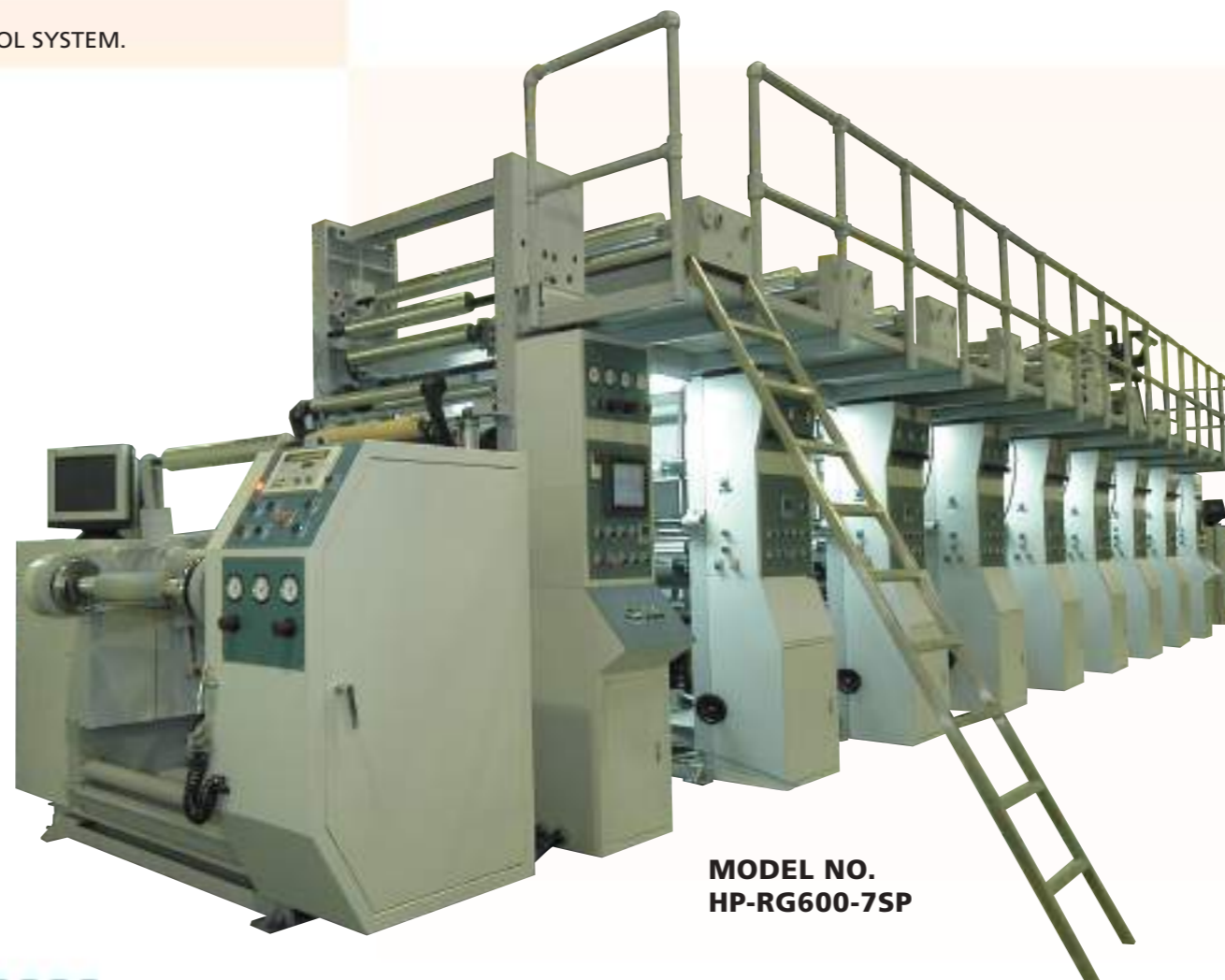
- (1) UNWINDING SECTION:
 - (A) TURRET TYPE AUTOMATIC FILM ROLL CHANGING SYSTEM
 - (B) AC SERVO MOTOR WITH VECTOR CONTROLLER AND AUTOMATIC TENSION CONTROL SYSTEM.
 - (C) AC PRE-ROTATION SYSTEM FOR HIGH SPEED FLYING SPLICE.
 - (D) AUTOMATIC EDGE POSITION CONTROLLER (EPC)
- (2) PRINTING SECTION:
 - (A) FRAME THICKNESS 90 MM
 - (B) WITH MANUAL MICRO PRE-ALIGNMENT SYSTEM.
 - (C) FIXED TYPE PLATE CYLINDERS.
- (3) DOCTOR BLADE DEVICE:
 - (A) DOUBLE SHAFTS WITH 4 POINTS LINE BEARING SUPPORT.
 - (B) VERTICAL, HORIZONTAL AND ANGULAR ADJUSTMENT.
 - (C) WITH PNEUMATIC CONTROL.
- (4) REWINDING SECTION:
 - (A) TURRET TYPE AUTOMATIC FILM ROLL CHANGING SYSTEM
 - (B) AC SERVO MOTOR WITH VECTOR CONTROLLER AND AUTOMATIC TENSION CONTROL SYSTEM.
 - (C) WEB VIEW SYSTEM
 - (D) AUTO FLYING SPLICE SYSTEM.
 - (E) AUTOMATIC REGISTER CONTROL.

'HP-RG-SP' SERIES: NUMBER OF COLOURS: 5, 6, 7, 8, OR MORE.
PRINTING WIDTH: 600, 800, 1000, 1200, 1400 MM

MAX PRINTING SPEED		150-180M/ MIN.
PRINTING LENGTH		300-900 MM
INFEEED UNIT		AC SERVO 3.7 KW
OUTFEED UNIT		AC SERVO 3.7 KW
UNWINDER UNIT		AC SERVO 3.7 KW
REWINDER UNIT		AC SERVO 3.7 KW
DRYER	AIR VOLUME	50 CMM
	AIR VELOCITY	22 - 25 M / SEC.
	AIR NOZZLE QTY.	10 PCS
	HORSE POWER	3.75 KW
HEATER CAPACITY		54KW
MAIN MOTOR	5 COLORS	AC SERVO 11 KW
	6 COLORS	AC SERVO 11 KW
	7 COLORS	AC SERVO 15 KW
	8 COLORS	AC SERVO 15 KW

OPTIONAL ATTACHMENTS:

- (1) PLATE CYLINDER WITH SHAFTLESS CLAMPING SYSTEM
- (2) INK VISCOSITY CONTROL & INK CIRCULATION SYSTEM
- (3) TURN BAR SYSTEM (FOR REVERSE PRINTING)
- (4) MATERIAL ROLL (FILM ROLL) FIXED BY SHAFTLESS CLAMPING SYSTEM



MODEL NO. HP-RG600-7SP